

Supplemental Data

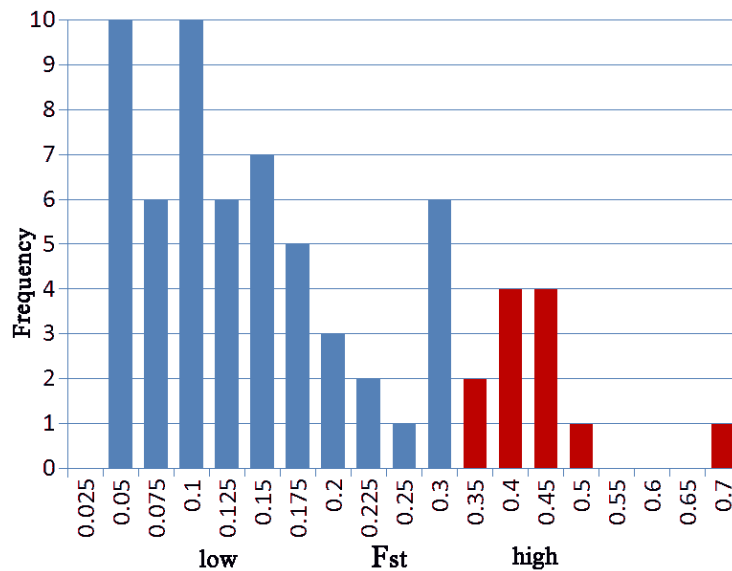
Genetic Landscape of Eurasia

and “Admixture” in Uyghurs

Hui Li, Kelly Cho, Judith R. Kidd, and Kenneth K. Kidd

Figure S1. The Distribution of F_{st} across Eurasia for the 68 SNPs Studied

The 12 SNPs with the highest values (red) give virtually the same results for Uyghurs as do all 68 SNPs, suggesting that most information on population relationships resides in that subset. The rs numbers and F_{st} values for the 12 SNPs are shown below.



RS#	F_{st}
rs16891982	0.681
rs333113	0.486
rs1815129	0.420
rs17822931	0.412
rs1876482	0.408
rs11160371	0.404
rs10763644	0.394
rs11713996	0.382
rs1867958	0.357
rs2065160	0.352
rs2065982	0.344
rs730570	0.334