

TABULATION OF DATA

The essential contribution of this publication is embodied in the tables that follow. Although the ultimate purpose of such statistical analysis is to facilitate comparison with other racial groups, the omission from the present report of any extended racial comparisons is deliberate. The main purpose of the present publication is to supply grist for the analytical and comparative anthropometric mills of other investigators who may have need of the data given herein. An effort has been made therefore to so arrange the data in tabular form as to make them most readily accessible to those interested. Table 1 gives a summary list

Table 1. Summary of cardinal measurements and indices

MEASUREMENTS	MEAN	S.D.	V
Stature [1]	168.57 ± .09	5.20 ± .06	3.08 ± .04
Span [15]	170.23 ± .12	6.17 ± .08	3.62 ± .05
Sitting height [46]	91.09 ± .05	2.87 ± .03	3.15 ± .04
Weight [33]	60.09 ± .12	6.87 ± .08	11.43 ± .14
<i>Spain-Stature index</i> [123]	100.98 ± .07	2.22 ± .05	2.20 ± .05
<i>Sitting height index</i> [101]	54.16 ± .02	1.09 ± .02	2.02 ± .03
Head length [34]	18.85 ± .01	0.62 ± .01	3.31 ± .04
Head breadth [35]	15.27 ± .01	0.53 ± .01	3.49 ± .05
Head height [36]	13.14 ± .01	0.48 ± .01	3.67 ± .05
<i>Cephalic index</i> [134]	81.14 ± .08	4.08 ± .06	5.03 ± .07
<i>Height length index</i> [135]	70.04 ± .06	3.27 ± .05	4.67 ± .06
<i>Height breadth index</i> [136]	86.34 ± .07	3.61 ± .05	4.18 ± .06
<i>Anatomic facial index</i> [140]	87.87 ± .09	4.84 ± .07	5.50 ± .08
<i>Physiognomic facial index</i> [139]	76.32 ± .08	4.13 ± .06	5.41 ± .07
<i>Nasal index</i> [144]	68.66 ± .11	5.89 ± .08	8.58 ± .12

of the measurements usually thought of as most important for purposes of racial appraisal and comparison. Table 2 lists the measurements utilized in the construction of the proportion-figures shown in figures 1 and 2. The detailed measurements and statistical constants comprising the main body of the present contribution are tabulated in tables 3 to 13 inclusive at the end of the text. In this

Table 2. Comparative relative measurements for construction of proportion-figures

	Northern Chinese	Occidental (Martin*)
Total stature	100.00	100.0
Head and face height †	13.34	13.5
Acromial height ‡	81.80	80.4
Stem length [101]	54.16	52.0
Ant. trunk length [114]	32.63	30.2
Biacromial breadth [126]	21.93	24.0
Interspinal breadth ‡	14.04	18.2
Total arm length [118]	44.11	44.2
Upper arm [115]	18.99	18.6
Forearm [116]	14.40	15.0
Hand [117]	10.96	10.6
Height iliospinale ‡	54.56	55.3
Total leg length [122]	52.39	53.4
Thigh [119]	26.10	26.6
Leg [120]	21.86	22.9
Foot height †	4.18	4.0

* Averages of figures given for the two representative proportion figures of Martin (i. c., p. 328)

† Based on supplementary calculations not otherwise tabled.

‡ Ratio of means only, not otherwise tabled.

series the first five tables (3 to 7) are devoted to absolute measurements, including the coefficients of correlation of the various measurements with stature. Tables 8 to 13 are devoted to relative measurements. Within each of these chief subdivisions each individual table is in the main devoted to the specific measurements of a particular body region. The bracketted figures immediately following the designation of the measurement ([1], [36], etc.) refer to the serial numbers of the respective measurements in the list given above in the text, and are cited in the tables for purposes of more complete identification where such is necessary. The last table of the series (table 14) presents a summary of the non-metric observations.

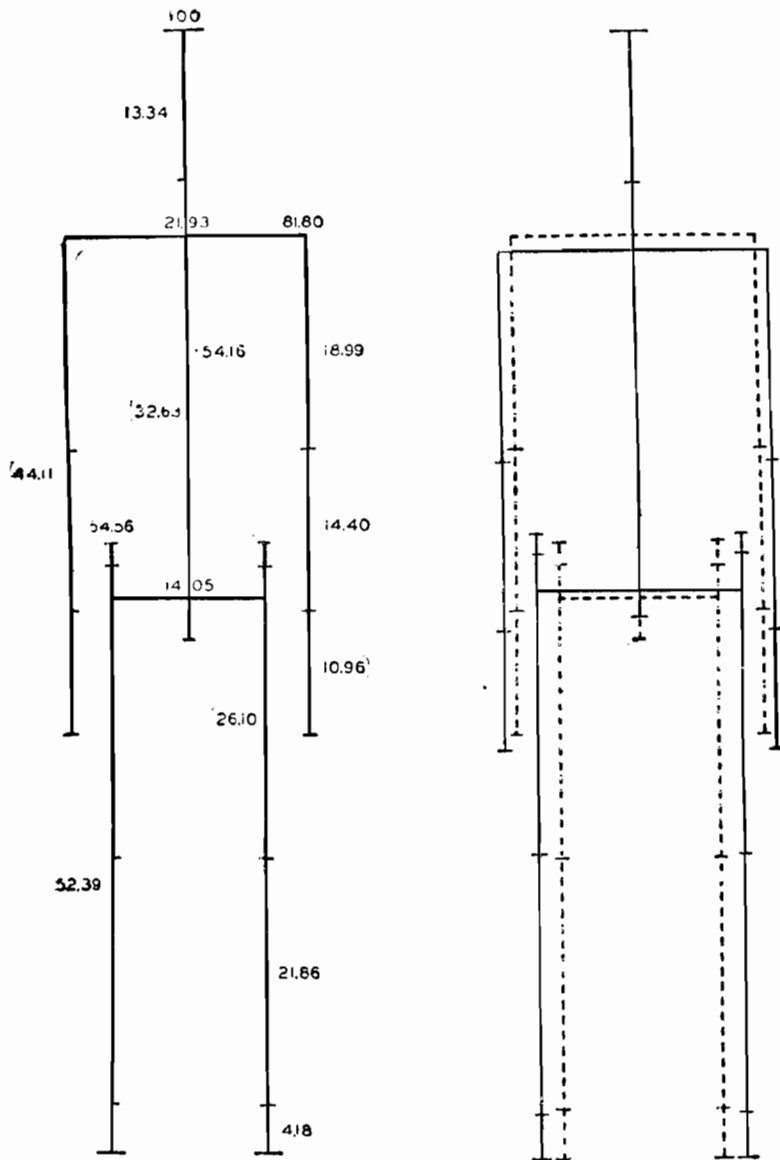


Figure 1. Proportion figure, male Chinese of the North China Plain.

Figure 2. Comparison of Chinese (dotted line) and a representative occidental proportion figure (after Martin). (Cf. Table 2.)